

LORP Liaison Group

1 March 2022

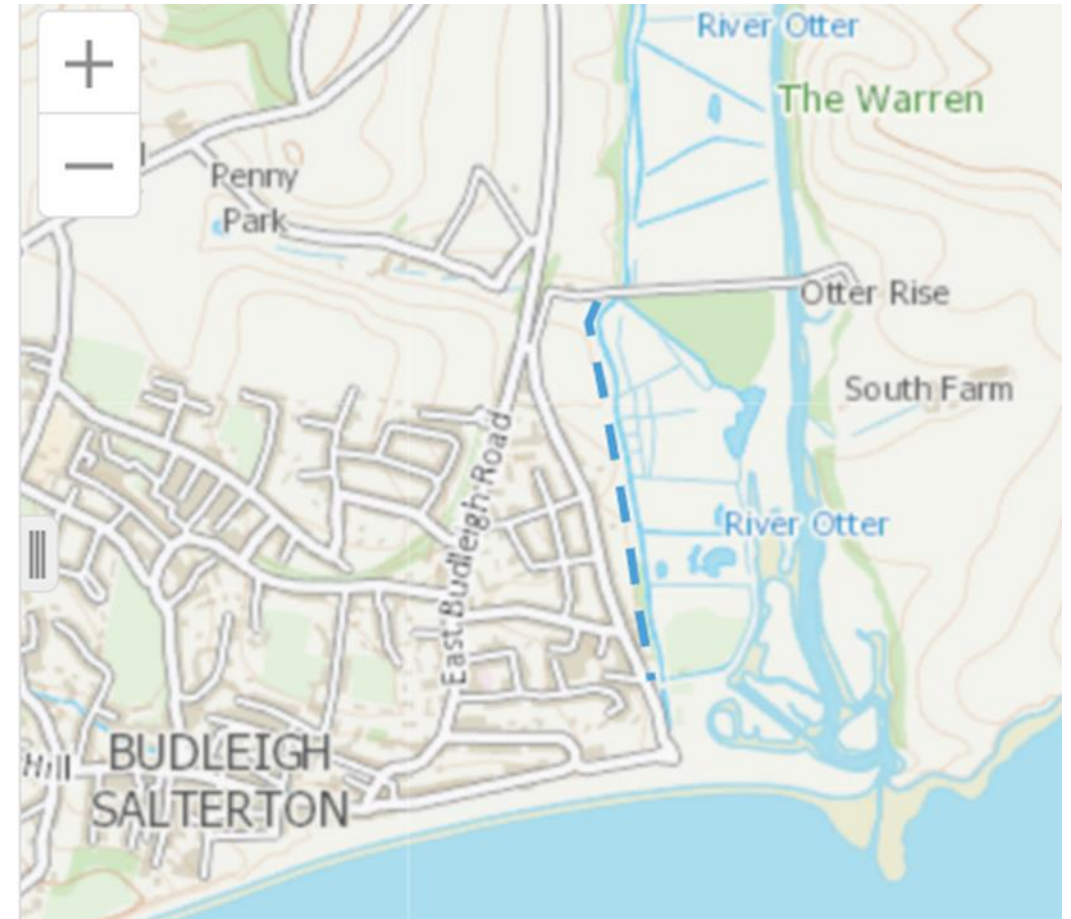
Welcome



European Regional Development Fund

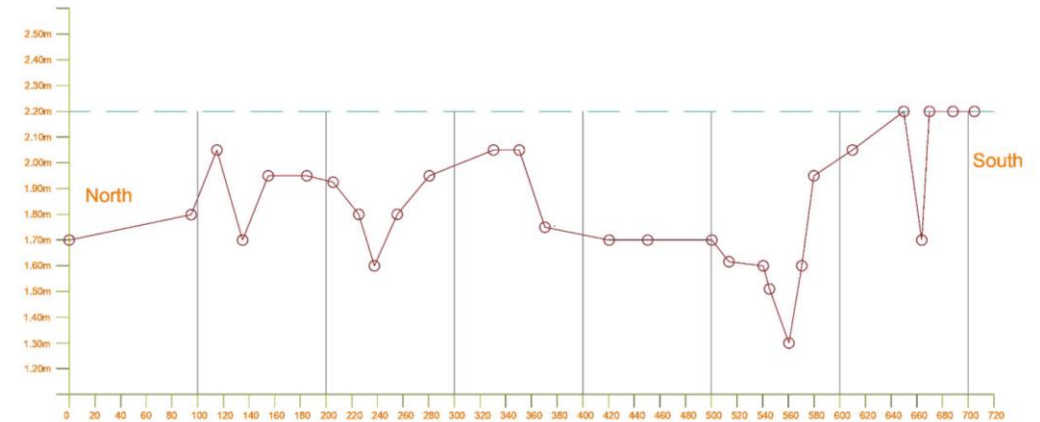
Western footpath south of South Farm Road

- Footpath to the west of the flood plain, south of South Farm Rd (BS-12/ EB-3)
- Was going to be raised by FAB Link
- LORP is now to undertake these improvement works – increased level and improved surfacing
- Planning amendment to be submitted April 2022
- Once permissions are in place construction will be as part of main LORP scheme



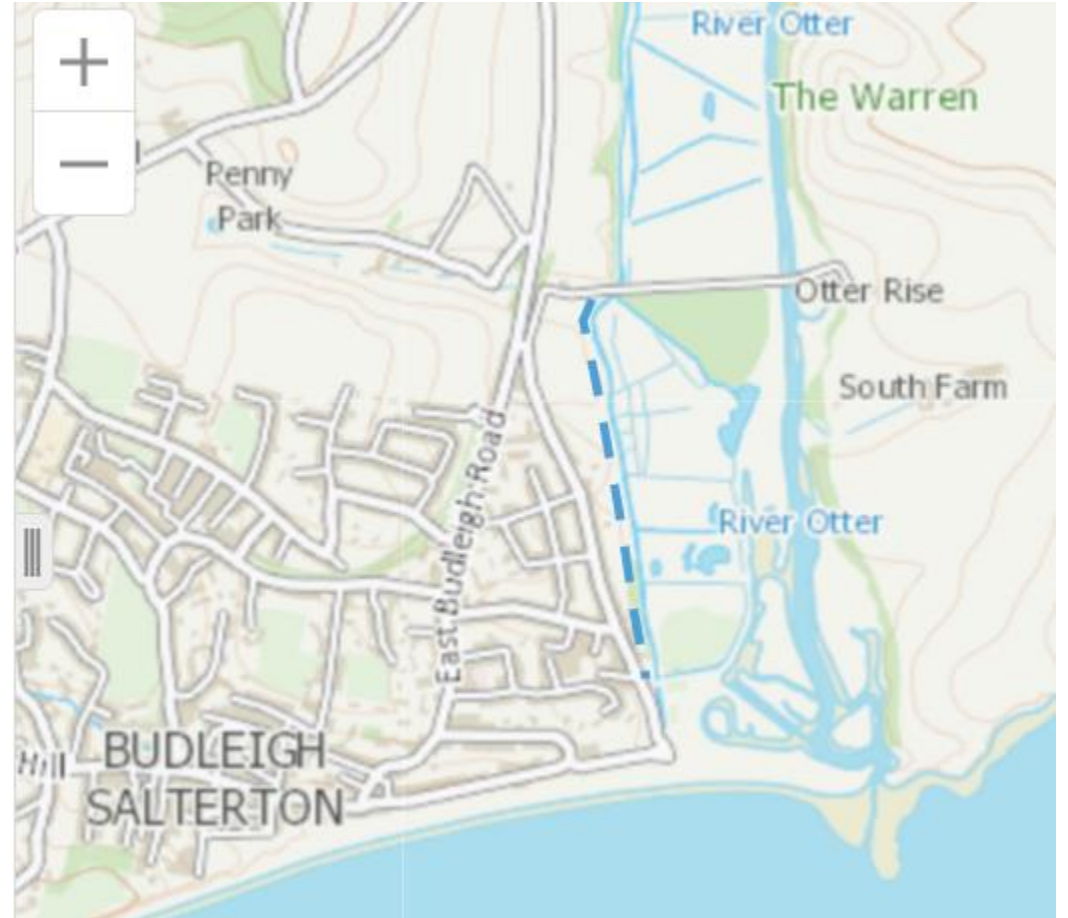
Outline design of western footpath

- Footpath raised onto a small embankment at 2.2mAOD (the existing levels are generally between 1.7mAOD & 2.2mAOD)
- Footpath width of 1.5m (same as FAB)
- Power cable will be put underground to west of small embankment
- Adjacent drain will need to be moved east for some of the length
- Planning amendment will include a buried sheet pile for FAB Link to install



Western footpath – timing and communication

- Planning amendment mid-April
- We will promote it once it has been validated and referenced by EDDC
- Will let Liaison Group know via Stakeholder Update
- Consultation via EDDC
- Decision mid-August
- Construction August onwards





Dan Boswell
Environment Agency
Project Manager



Maintenance

- Principles of scheme
- Competent authorities
- Remit of authorities and tools
- Groups of assets

Overarching principles

- Scheme designed to be low maintenance
- Ownership remains unchanged
- Responsibilities largely unchanged

Authorities

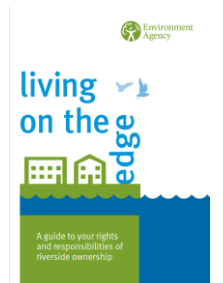
Main competent authorities

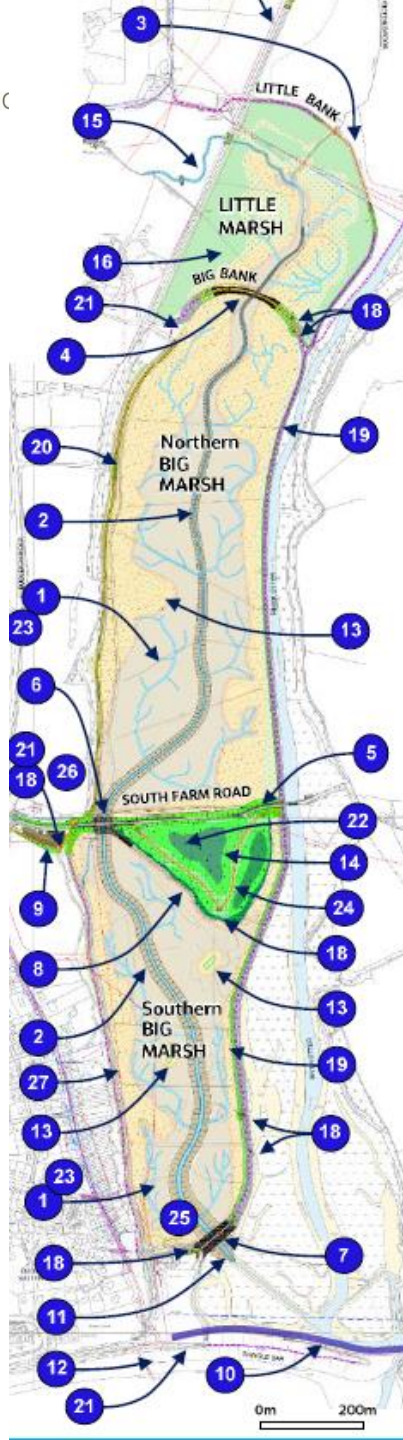


These responsibilities are largely unchanged from the pre-scheme situation

Tools

- CDEs management schedules
- CDE employment of dedicated warden/ranger for the site
- LEMP – Landscape and Ecological Management Plan - sets out the management and maintenance of landscaping works.



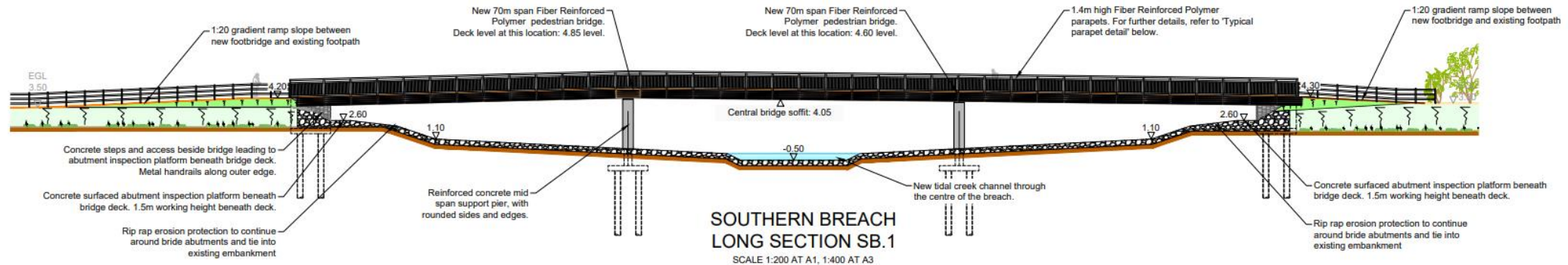


River Otter, Kersbrook & Budleigh Brook

- CDE has riparian responsibilities
- EA maintenance permissive powers on Budleigh Brook and the River Otter
- DCC oversight on Kersbrook

South Farm Road embankment, Bridge & Footbridge

- DCC to adopt highway and bridge
- Where there is a culvert associated with the highway it will be maintained by DCC



Culverts

- Two culverts on Budleigh Brook on private land
- These will be maintained by CDE
- Budleigh Brook railway culvert will be regularly inspected by EA asset inspector

Tip site

- Corner excavated and removed for remediation.
- Remaining area capped
- Edge of site to benefit from improved erosion protection.
- Site remains in ownership of CDE

Footpaths

- DCC PROW maintenance in accordance with maintenance schedules as determined by DCC prioritisation of expenditure
- Where there is a culvert beneath a footpath this will be the responsibility of DCC
- The footbridge is to be adopted by DCC and maintained as above.
- Fencing maintenance to be undertaken by CDE

Landscape and planting

- Planting to be undertaken in accordance with the Landscape Master Plan
- Maintenance in accordance with the Landscape Maintenance and Management Plan. Delivered by the Contractor for the first year following completion of the works and will thereafter be undertaken by CDE
- Overseen by dedicated CDE warden

Summing up

- Responsibilities - unchanged
- The project is upgrading this infrastructure – made more resilient – designing out maintenance
- System works better, and need less input to maintain to a higher standard
- Better oversight than ever before with a dedicated CDE ranger

Education and Engagement

How the River Otter can adapt to Climate Change

Kate Ponting, Countryside Learning
Clinton Devon Estates



Climate Change and Habitat Restoration in the Otter Valley

Opportunities for primary schools available from February 2022

Rivers - Coasts - Local History - Environmental Change - Climate Adaptation

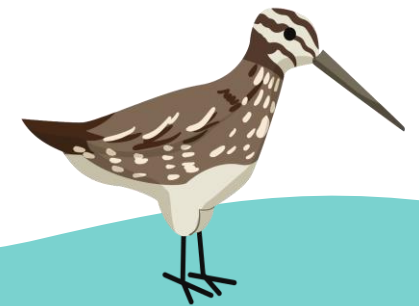


Would your school/class like to find out about how a local valley is adapting to climate change and understand how this will deliver many benefits for people and wildlife?

- In school presentations from one of the project team from February 2022.
- Follow-up activities and curriculum linked resources.
- FREE guided educational visits between March-October 2022 (support with transport costs possible)



To get your school involved and find out more about our exciting educational opportunities for local schools please email kate.ponting@clintondevon.com or call 01395 443 881



Name:

School/Group:

Write two things you know about the project...

Have you ever visited
the Otter Estuary
before?

YES

NO



Did anything surprise you?

If you visit in the future what will you look out for?



Ask the project team a question...



Circle if you think the Lower
Otter Restoration Project is...



good news



bad news



don't know?

...for people.



good news



bad news



don't know?

...for wildlife.



good news



bad news



don't know?

...for the planet.

Why are you only taking out part of the embankment
and not taking out the whole thing?

How many other places is this happening?

I learned there is a thing called a floodplain.

I didn't know that mud stores carbon.



Citizen Science



Dear Project Team

Let me start by saying what a wonderful project you have embarked on and I wish you every success. I was discussing the project with a group of friends the other day and someone suggested that a flooded Otter Valley would be a magnet for mosquitoes, and may cause the area to become malarial. My own belief is that the combination of river flow and tide, plus the large number of feeding birds would prevent any large build up of mosquitoes. I have not seen any evidence of them at the RSPB site near Darts Farm. However, if global warming effects the Otter Valley, it could become a viable breeding ground for mosquitoes. Has this possibility been considered and is it felt to be a potential long term threat? I look forward to your response with interest. Best wishes and every success. Mark Stevens

Hello Mark,
Thank you for your email and well wishes.
I'm employed by *Clinton Devon Estates*, but will answer on behalf of the wider project team.

Yes the potential of increasing mosquitos habitat has been considered, as can be seen from the attachment. This extract from the issues log shows a concern arose during the public consultations and planning for the project in 2016. This risk to public health was taken seriously and investigations were commissioned before bringing the proposal before planning in 2020. Public Health England surveyed. I include a summary of the work and findings taken from the project FAQs, which are available along with a wealth of other information at the project website <http://www.lowerotterrestorationproject.co.uk/>

Q15: Could the project attract mosquitoes which pose a risk to health?

A15: Experts from Public Health England believe that the increased health risks from this scheme associated with biting insects is low if there is careful design and management. The type of habitat created under the scheme is generally unsuitable for invasive mosquito species.

Research conducted at the site showed no current evidence of *Aedes detritus*, which is the common nuisance species associated with brackish habitat. *Anopheles claviger* was common and associated with the flooded grassland and freshwater ditches. This isn't associated with nuisance biting. If the intertidal zone is regularly flooded and drained then mosquito suitability will remain low. The key factor that will determine future mosquito pressure related to habitat changes is drainage. The project design has been guided by information supplied by Public Health England (PHE) and outputs from the Wetlands LIFE project, so minimising the likelihood of increased risk from mosquitoes.

I hope that provides answers your questions and reinforces your own conclusion so your friends are reassure too. One of the main benefits of the scheme is that timely action means the work can be planned and the creeks designed to drain effectively. A catastrophic breach followed by tidal inundation onto fields with poor drainage would offer no such assurances.

With kind regards
Kate

Kate Ponting BEd (Hons)
Countryside Learning Officer

Email responses

I was just wondering whether there will be any pollution from the old landfill site? I'm sure this has all been looked into! It would just be an awful shame if pollutants could leach into the waterways etc.

But otherwise what an amazing project is being undertaken ! When do think the project will be completed?
Look forward to hearing from you.

Angela Catton, Wiggaton

Dear Kate,
Thank you for getting back to me so quickly!
I'm very reassured by what you've said and appreciate the dilemma it presents.
The whole restoration project will be amazing for nature and I really look forward to visiting the site when we can.
Many thanks,
Angela Catton



mail@lowerotterrestoration.co.uk

Digital engagement

All Users
+0.00% Users

+ Add Segment

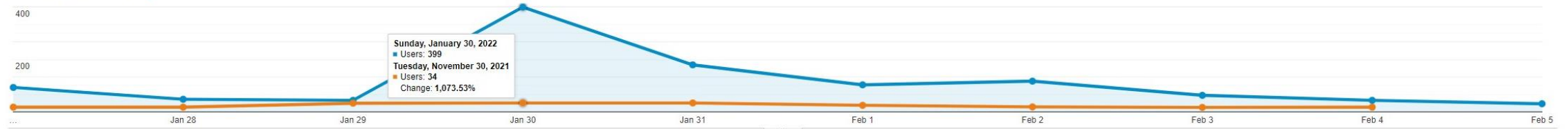
Jan 27, 2022 - Feb 5, 2022
Compare to: Nov 27, 2021 - Dec 5, 2021

Overview

Users VS. Select a metric

Hourly Day Week Month

Jan 27, 2022 - Feb 5, 2022: Users
Nov 27, 2021 - Dec 5, 2021: Users



Users

472.83%
991 vs 173

New Users

626.56%
930 vs 128

Sessions

402.42%
1,246 vs 248

Number of Sessions per User

-12.29%
1.26 vs 1.43

Pageviews

336.28%
2,766 vs 634

Pages / Session

-13.16%
2.22 vs 2.56

Avg. Session Duration

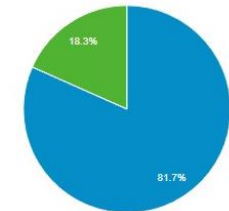
-13.61%
00:02:38 vs 00:03:03

Bounce Rate

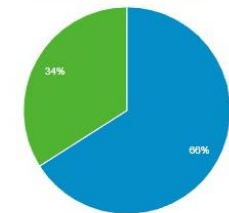
8.16%
56.26% vs 52.02%

New Visitor Returning Visitor

Jan 27, 2022 - Feb 5, 2022



Nov 27, 2021 - Dec 5, 2021



Users % Users

Demographics

Language

Country

City

Browser

Language

1. en-gb

Jan 27, 2022 - Feb 5, 2022

Nov 27, 2021 - Dec 5, 2021

Responding to Suggestions



KIER at Lower Otter
Construction Company

Home Groups Reviews

About

Kier Site Offices, Granar
EX9 6EP Budleigh Salter

Lower Otter Restoration Project

In partnership with the Environment Agency & Clinton Devon Estates

| You Said | We Did |
|---|--|
| <ul style="list-style-type: none">You asked for more signage to prevent people parking along South Farm Road and obstructing access.You asked us to try and reduce noise near local housing.You asked us to screen our machines parked in our compound over Christmas.You asked for bark chippings and wood.You asked us to clean the roads more.You asked us to communicate more. | <ul style="list-style-type: none">We put more signage up along South Farm road and also signs to direct vehicle users to use Lime Kiln Car Park 😊 We also installed lighting to assist road users.We moved our Woodchipper away from houses to reduce disruption to local residents.We lowered the arms and moved our machinery over the Christmas break 😊We have donated timber to Axewoods and wood chippings to local residents 😊We increased the frequency of visits by our road sweeper 😊We have set up a new Facebook Page called "Kier at Lower Otter" 😊 |

please scan & find out more!

KIER

Kier Integrated Services
Regional Civils

LORP Liaison Group

Questions

